



1. FIND STORM DRAIN(S)

- ___ Determine the flow path of surface water.
- ___ Locate all down slope storm drains.
(If there are no drains in the parking lot, the nearest one could be in the street curb)

2. COVER STORM DRAIN(S)

- ___ Carefully sweep area around the storm drain.
- ___ Unwrap storm drain mat (black or orange).
- ___ Completely cover the storm drain.
- ___ Place sticky side of cover face-down.
- ___ If necessary, use weights to ensure a good seal around mat (especially in the corners if the drain is in the curb).

3. SET UP TEMPORARY BERM

- ___ Unwrap berm and lay it on top of the storm drain mat in a loose "L" shape to collect water.
- ___ A berm may also be used to direct water to nearby landscaping, as shown at right.

Note: Be careful not to put berm or storm drain mat in dirty areas.

4. PREPARE SUMP PUMP

- ___ Before using any water, place the sump pump inside the berm's "L" shape.
- ___ Connect one end of the 15' garden hose directly to the pump.
- ___ Connect the other end of the 15' garden hose to the 25' soaker hose.
- ___ Place the 25' soaker hose onto a permeable area like grass, soil, mulch, or nearby plants.
- ___ Use cones to protect the pump and to keep people out of the area.

Note: Do not lay soaker hose across electrical wires.

5. PROVIDE POWER TO SUMP PUMP

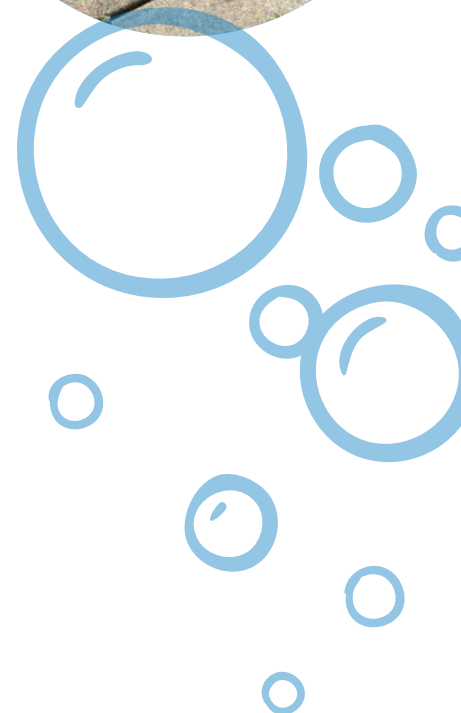
Note: Use extreme caution any time you are around electricity and water.

- ___ Before using any water, connect the pump's two electrical cords together by inserting the black plug into the attached adaptor (grey).
- ___ Plug the grey adaptor into the extension cord (orange).
- ___ Plug the extension cord into the in-line GFCI (yellow).
- ___ Plug the GFCI cord into the wall/power source.
- ___ Verify the GFCI cord is "ON" as indicated by the red LED light.
- ___ **Double check all connections are dry and away from any potential water sources.**

Note: The WAYNE sump pump will automatically start when there is 1 3/4" depth of water.

6. CONNECT TO A WATER SOURCE

- ___ Connect the water-saving nozzle to the 50' garden hose.
- ___ Connect the garden hose to a water source.



PROPER FUNCTION & CLEAN UP

WHY USE A CAR WASH KIT?

Car washes make great fundraisers, but they have the potential to be harmful to our local creeks and rivers.

Water in our streets and parking lots flows into storm drains and eventually into our creeks, rivers, and oceans without treatment or filtration.

Soapy water from car washing has the potential to transport materials washed from the vehicle such as metal shavings from brake dust and rotors, vehicle fluids (engine oil, antifreeze, transmission fluid), and road contaminants to creeks. Using the car wash kit is the best way to keep potential pollutants out of our water!

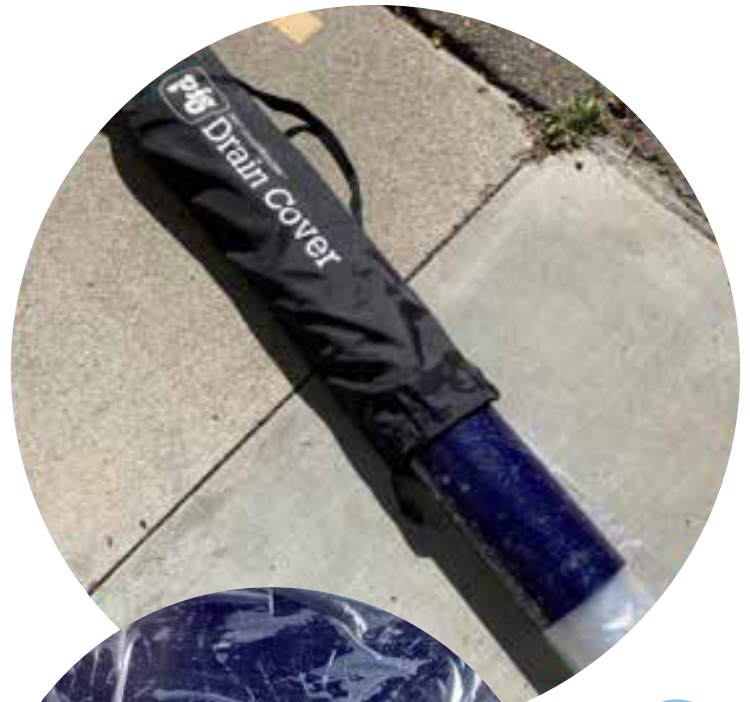
DURING YOUR CAR WASH

- **ALWAYS unplug the sump pump from the power source before touching or moving the pump.**
- Ensure all water and soap are contained within the black berm.
- Frequently check designated permeable area. If pooling occurs, move soaker hose to a new area.

AFTER YOUR CAR WASH

- Unplug sump pump from the power source.
- Neatly wrap extension cord onto holder.
- Clean off dirty items and allow to dry if possible.
- Fully drain hoses into landscaped area or sink drain.
- Neatly coil drained hoses.
- Wrap berm in the provided plastic.
- Wrap storm drain cover in the plastic provided, roll up, and return to fabric case.
- Collect car wash sign(s) and return to case.
- Return all items to the bin (use checklist provided).
- Notify the City of any damaged or missing equipment, or equipment in need of maintenance or repairs upon return.

**THANK YOU
FOR KEEPING OUR
CREEKS CLEAN!**



WHAT'S IN THE KIT?

CITY OF SANTA ROSA
STORM WATER & CREEKS
707-543-4525
69 STONY CIRCLE
SANTA ROSA, CA 95401

(1) Storm Drain Mat



(1) Case for Storm Drain Mat



(1) Temporary Berm



(1) WAYNE Submersible Pump



(1) 50' Extension Cord



(1) In-Line GFCI



(1) 25' Soaker Hose



(1) 50' Garden Hose



(1) 15' Garden Hose



(1) Water-Efficient Nozzle



(4) Traffic Cones



WHAT'S IN THE KIT?

(2) Sponges



(2) Shop Rags



(1) Laminated Instruction Sheet



(2) Fish Friendly Signs



(2) Sign Bases



(2) Sign Weights



(1) Whisk Broom



(1) Push Broom



(1) Grease Pencil for Checklist



(1) Hand Pump



(1) Storage Bin with Lid



You are required to return all of the Car Wash Kit items in the same condition as when you received them.

You must notify the City of any damaged or missing equipment that is in need of maintenance or repairs, and the City may hold your organization responsible for the repair or replacement costs of any item(s) that are not returned or are damaged.